

## PERMANENT MAGNET DIRECT DRIVE PANEL FANS



### WARRANTY

J&D Mfg. warrants this products is free from defects in materials and workmanship under normal use for the period of three years from date of purchase. Our warranty does not cover ordinary wear and tear. J&D Mfg can repair or replace at our option, any product or part of the product that is found to be defective. Our warranty applies to materials only and does not include return freight, delivery, loss or damage to personal property, cost of removal or installation, any incidental or consequential damages or labor. This warranty does not apply to products which are misused, abused, altered, improperly installed or subject to negligence. All warranties must be approved through our warranty department. The original purchaser must present a copy of the invoice for the defective product.

### INSTALLATION

Please read over all instructions carefully before you begin. If you have any questions please call your local dealer, or contact J&D Manufacturing at 1-800-998-2398.

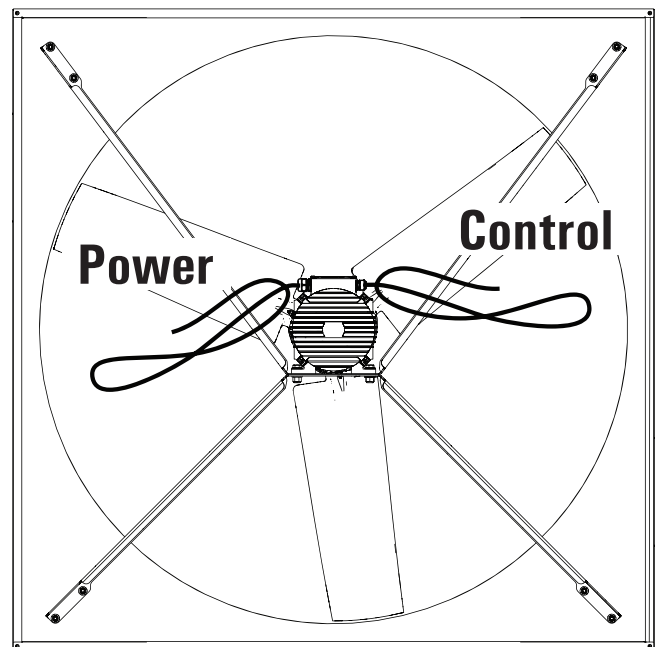


**DISCONNECT POWER**  
BEFORE INSTALLING OR SERVICING.



ALL ELECTRICAL WORK SHOULD BE COMPLETED BY  
QUALIFIED PERSONNEL AND MEET NATIONAL (NEC),  
REGIONAL AND LOCAL ELECTRIC CODES.

### Identify cords coming from motor



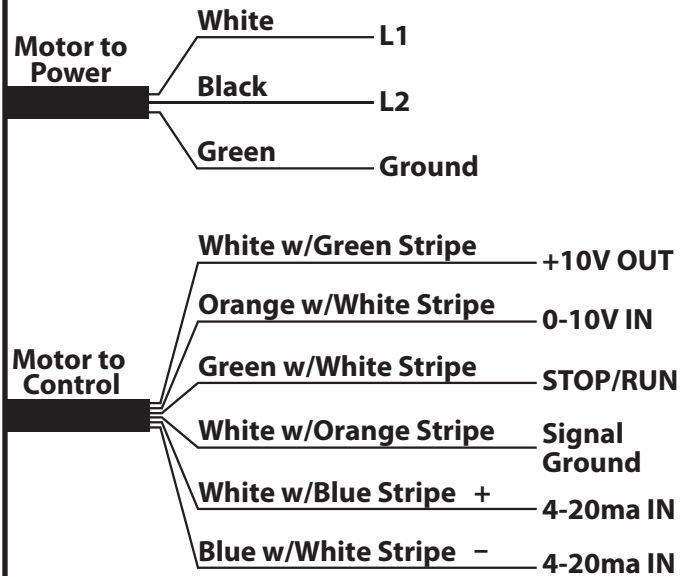
## General Wiring Instructions:

- Wiring should only be performed by a trained electrician to prevent injury or death.
- Install manual disconnect switch inside building adjacent to fan.
- Route wire to motor with drip loop and secure. Drip loop will drain accumulated moisture away from the motor.
- Configure internal wires to match supply voltage and wire according to motor nameplate. Test to verify correct rotation.
- Only permit power to unit when guards are properly installed to prevent injury.

## Control Wiring Instructions:

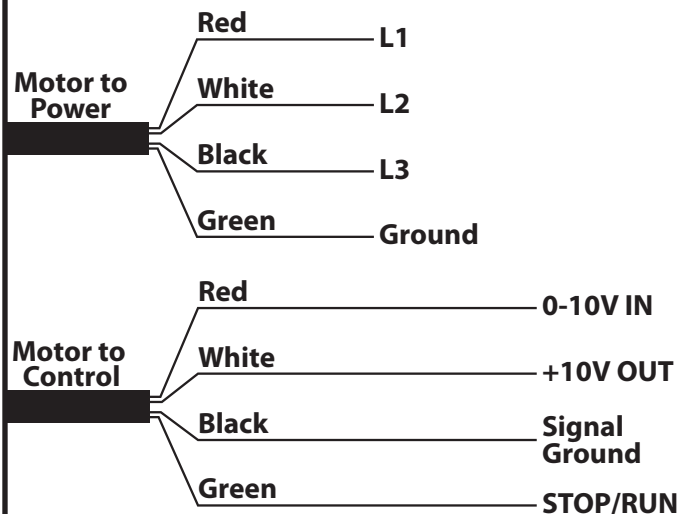
- For dry contact ON/OFF control, connect dry contact from STOP/RUN to signal ground.
  - Closed contact is motor ON, open contact is motor OFF.
  - Connect STOP/RUN wire to signal ground wire if dry contact ON/OFF control is not used.
- Use the two 4-20ma IN wires for analog current speed control.
  - Leave 4-20ma wires disconnected if not used, (less than 5.6ma is OFF).
- 0-10V in to signal ground for analog voltage speed control, (less than 1V is OFF).
  - Connect 10V OUT wire to 10V IN wire for no speed control, (full speed).
- Use four conductor 26AWG (or heavier), shielded, dual twisted pair, signal wire with drain wire from J&D control to Permanent Magnet fan.

## Single Phase Wired for 190-240v



- Use the two 4-20ma IN wires for analog current speed control.
  - Leave 4-20ma wires disconnected if not used, (less than 5.6ma is OFF).

## Three Phase Wired for 190-240v / 380-460v



## Maintenance Instructions:

- Disconnect power before cleaning or maintaining your fan in order to prevent serious injury or death.
- Service and repair of fan should only be completed by a qualified technician.
- For maximum efficiency and fan life, keep the following free from dirt and dust: blades, damper doors, motor and guard.
- The totally enclosed air over motor has sealed ball bearings and does not require additional oil.